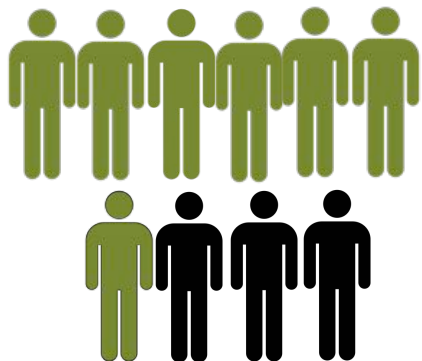
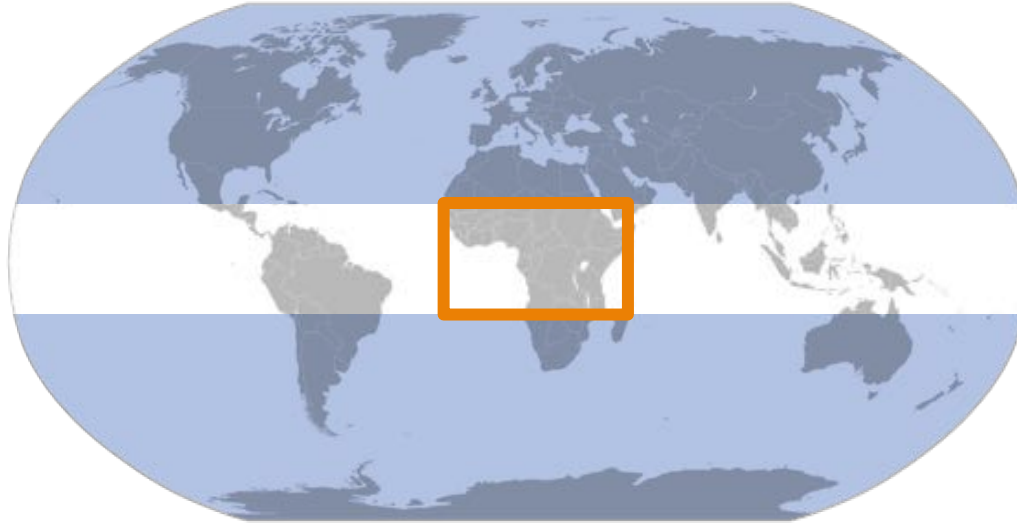


ignitia TROPICAL
WEATHER
FORECASTING

Predict.
Perform.
Profit.

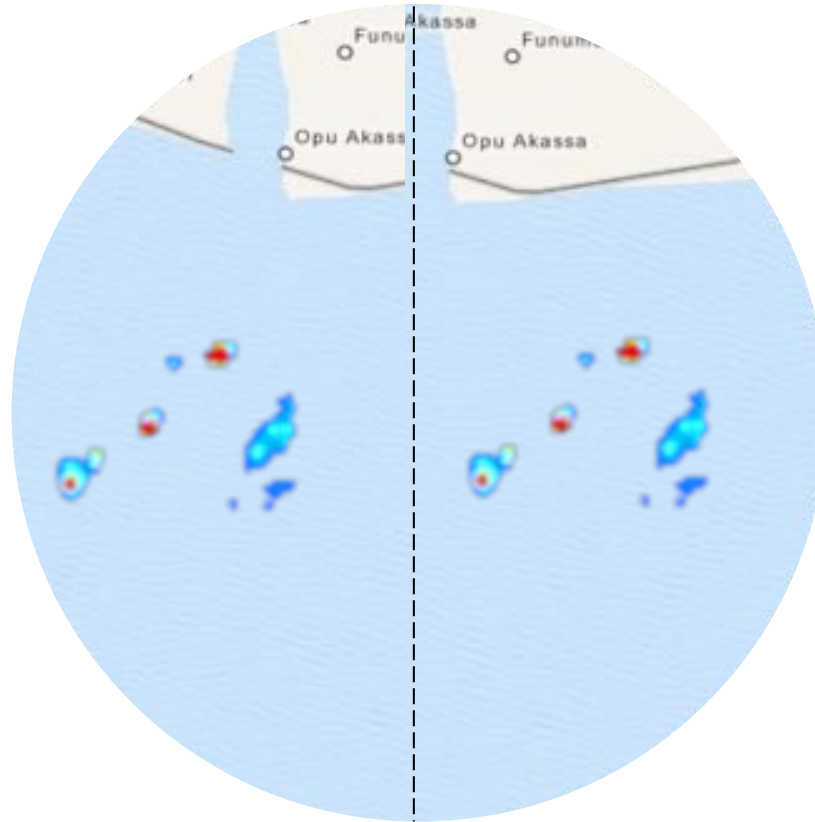


1 -> 2.4 billion

by 2050

80% agriculture

Satellite images of thunderstorms



- Two identical images showing precipitation from satellite
- Colors note the intensity of precipitation , where red is over 70mm/h

Ability simulating tropical storms

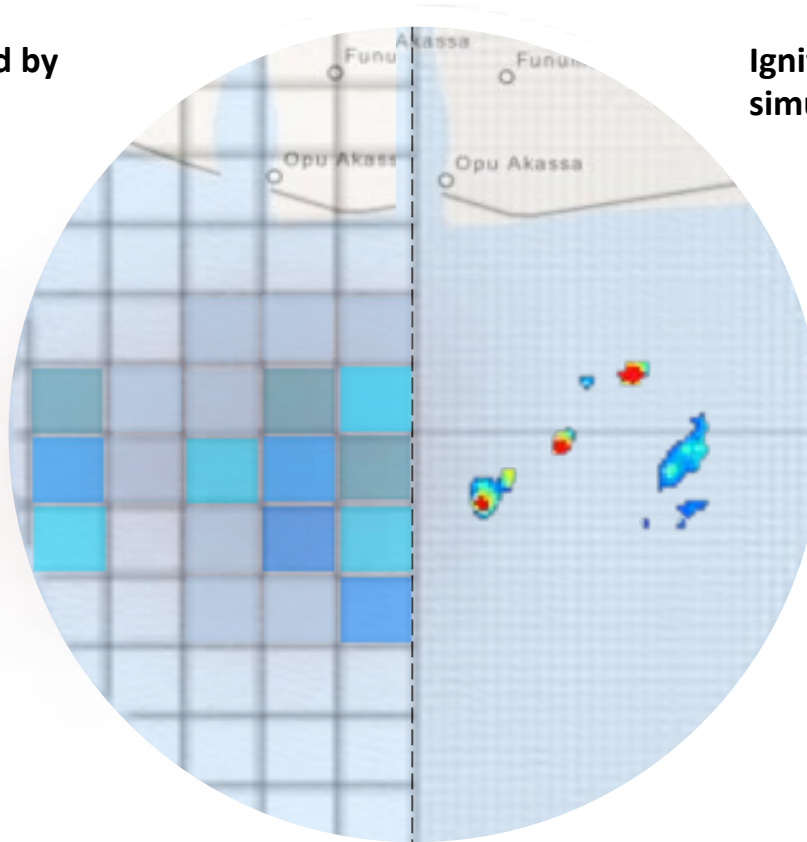
ignitia TROPICAL
WEATHER
FORECASTING

Global model simulation used by competitors



Ignitia's disruptive technology for simulating convective patterns

ignitia TROPICAL
WEATHER
FORECASTING



As a result...

- **39% average accuracy** of equatorial belt forecasts.
- over-predicted miss-located thunderstorms
- **84% average accuracy** of equatorial belt forecasts over three seasons.
- Near-accurate thunderstorm predictions.

Forecast comparison

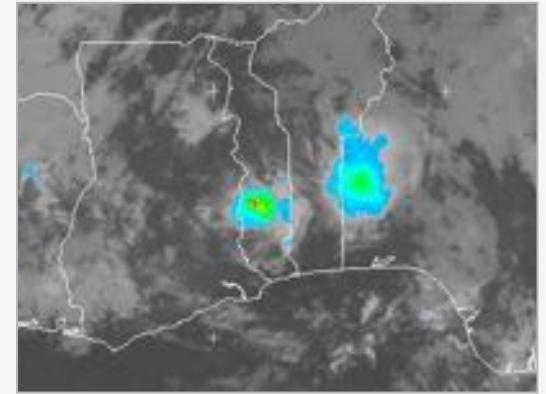
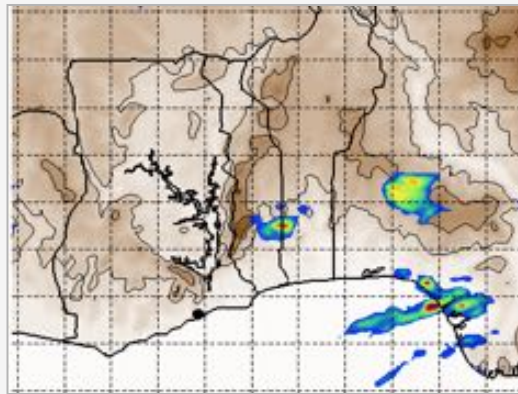
Comparison between forecasts on October 9, 2013, 00 UTC

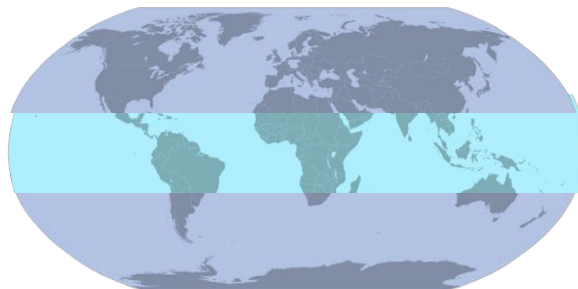
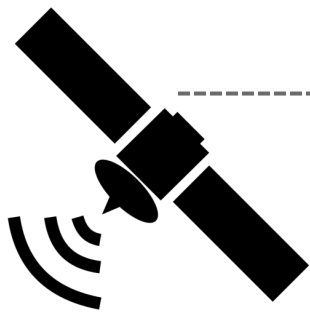
Comparative 48 Hour Rainfall Forecasts vs. Actual satellite image



ignitia

Actual
(48h later)

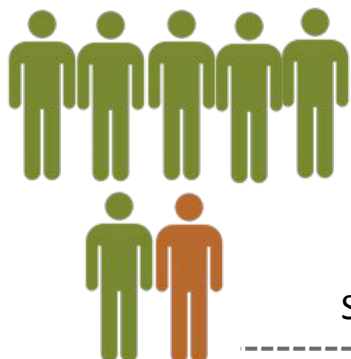




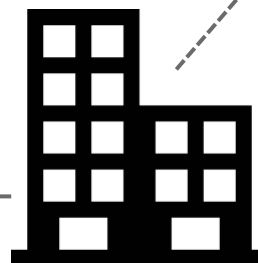
ignitia TROPICAL WEATHER FORECASTING



\$ 0.03



Sign up *455#



GPS location

$$\underbrace{\frac{\partial \mathbf{u}}{\partial t}}_{\text{Variation}} + \underbrace{(\mathbf{u} \cdot \nabla) \mathbf{u}}_{\text{Convection}} - \underbrace{\nu \nabla^2 \mathbf{u}}_{\text{Diffusion}} = \underbrace{-\nabla w}_{\text{Internal source}} + \underbrace{\mathbf{g}}_{\text{External source}}$$

Inertia (per volume) Divergence of stress



iska Predict. Perform. Profit.



Don't let the **rain** beat you. *Dial ***455#***

ignitia

ignitia

TROPICAL
WEATHER
FORECASTING

Predict.
Perform.
Profit.

Liisa Petrykowska
Managing Director
info@ignitia.se