

January 2015
Enrico Olivari

COMPANIES' CLUSTER

*"Sustainability for
Environment and Architecture"*

PROFILE OF THE CLUSTER

Table of Contents

_Mission

_Partners

_Services

_References

_Contacts





Mission

The Cluster is formed by Companies whose Mission is Building a Sustainable Future by providing Sustainable Services and Technologies for :

- _Development of New Projects
- _Management of Existing Assets
- _Support in Acquisition of Assets
- _Urban Planning & Design

Partners



www.elisasambiente.it, Milano, Italy



www.sige.ge.it, Genova, Italy



www.rescia.co.uk, London, United Kingdom



www.abad.it Milano, Italy



www.polimi.it Milano, Italy





Development of New Project

New area



Environmental Monitoring
Environmental Impact Assessment
Stakeholder Engagement
Resettlement Plans

Environmental and Architectural Sustainable Solutions Procedures

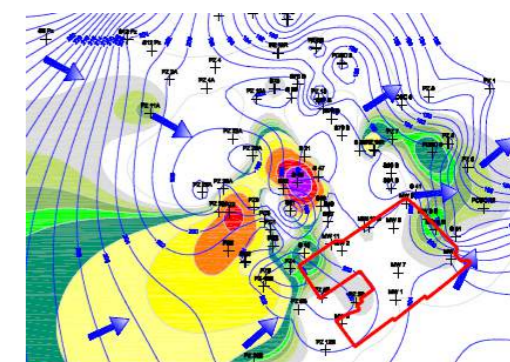


Siting and Identification of Host Corridors
Urban Planning
Green Building
Low GHG technologies

Selection of Best Available Technics



Decommissioned area
Polluted area





Management of Existing Assets

Industrial sites



Ports



Polluted areas - Landfill



**Environmental Audit &
Legal Compliances
Site Characterization
Polluted Sites Health Risk Assessment
Polluted Site Remediation and
Decommissioning
Environmental Management System
ISO 14001
Quality Management System ISO 9001**

**Energy Efficiency Assessment
Health & Safety for Workers
Waste Management
Green House Gas Accounting**

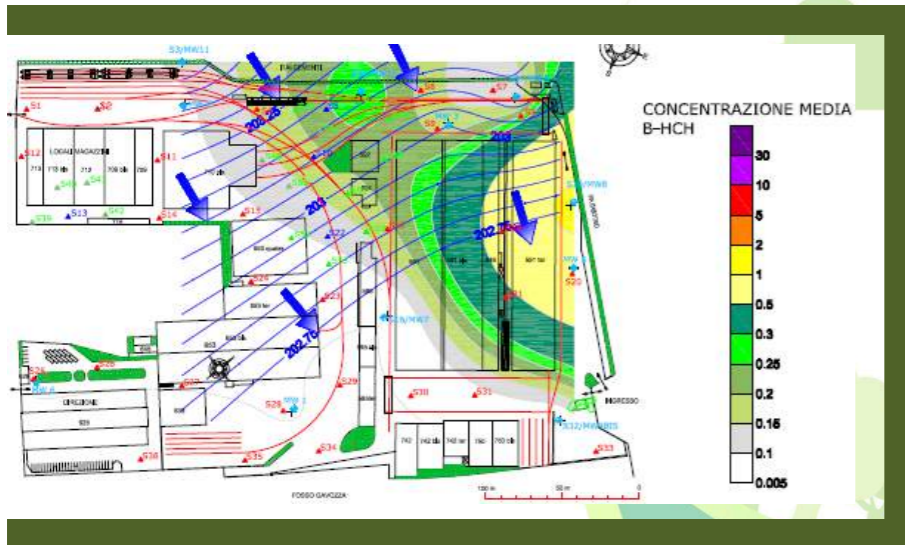


Support in Acquisition of Assets



Industrial sites

Due Diligence for Environmental & Legal Compliance
Environmental Audit & Monitoring



Decommissioned area
Polluted area

Cost Estimation of Environmental Liabilities



Green Technologies Support

**Low energy and GHG emission technologies:
Renewable energy transfer from soil,
groundwater and wastewater with heat pumps
for heating and cooling buildings:**

- Geothermal and Hydrothermal Systems
- Wastewater to Energy Systems

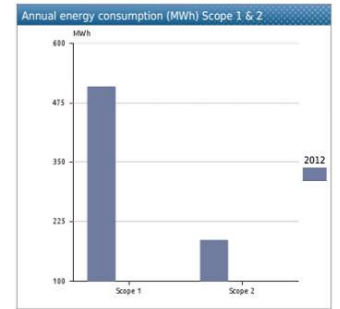
Photovoltaic

Eolic

**River-Tide Stream: renewable energy recover
from sea and river currents**

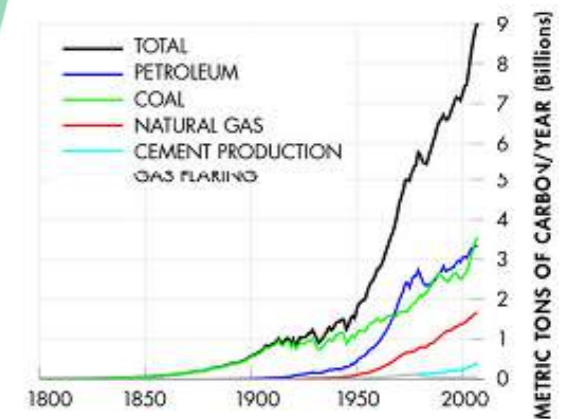


GHG Reduction Target



SUPPORT

**PROJECT
SUPPLY**





Details of Environmental Services

_Environmental and Social Impact Assessment

According to International Standards and Equator Principles, including environmental modeling, stakeholder engagement, identification of mitigation measures, etc...

_Soil and Groundwater monitoring and characterization

Design and support to soil and groundwater monitoring plans, site characterization strategy, contaminated sites remediation and safety activities according to EU and US standards

_Risk Assessment for Contaminated Sites and Landfill

Quantify the probability of harmful effects to individuals, population or environment caused by contaminated sites, landfills or industrial activities and evaluate the tolerable risks, according to international standards and guidelines

_Hydrogeological modelling

2D or 3D groundwater and aquifer modelling



Details of Environmental Services

_Waste Management

Best Practices and consulting services to manage waste according to Waste Hierarchy Principles (prevent, minimize, reuse, recycle, energy recovery, disposal) and International Standards

_Greenhouse Gas accounting

According GHG protocols, IPCC technical guidelines and ISO 14064 standards

_Environmental and Quality Management System

According to ISO 14001 and ISO 9001 international standards

_Best Available Low GHG Technologies Analysis

_Chemical Laboratory Certified Analysis

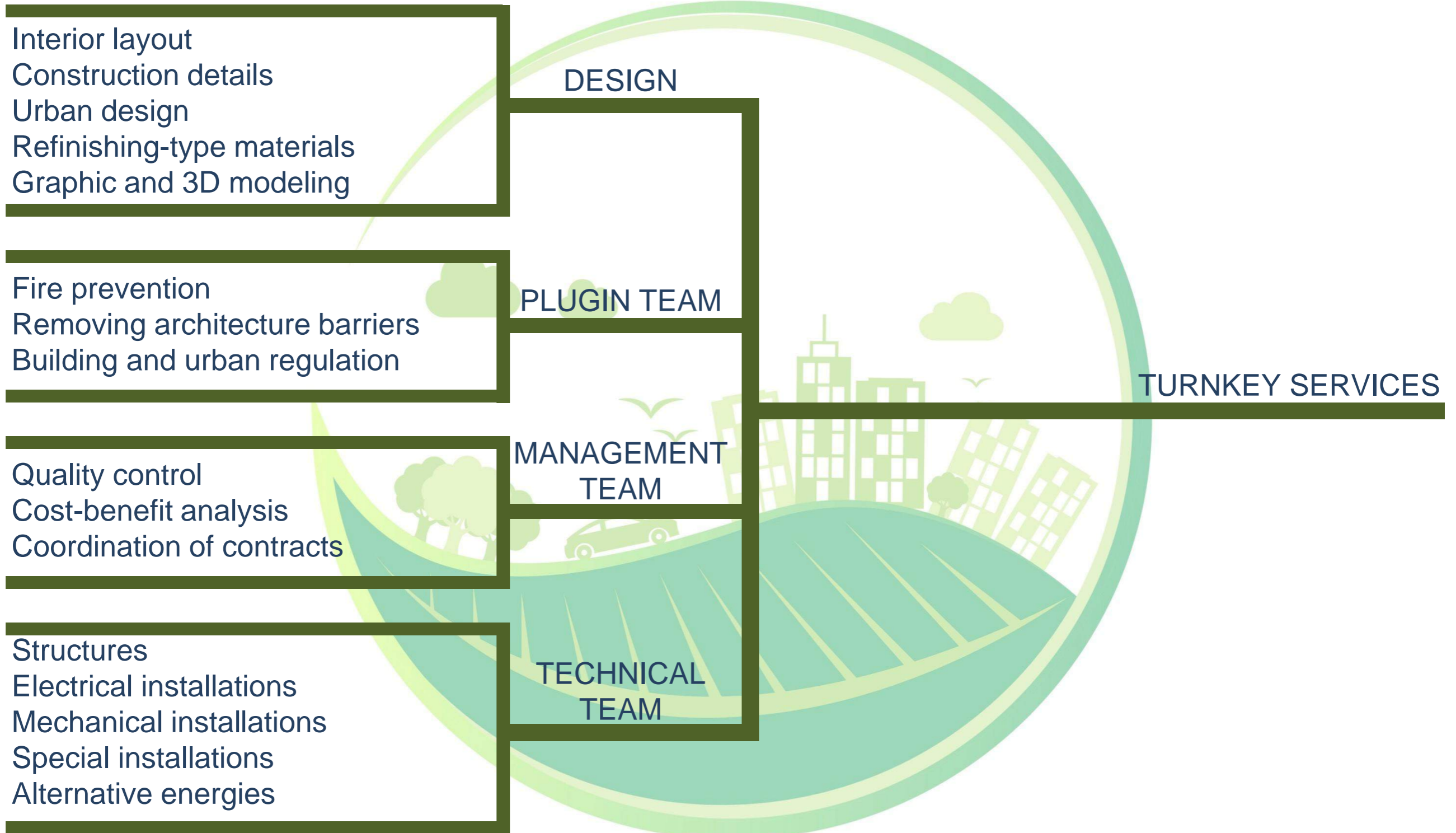
_Health and Safety procedures and job-related risk analysis

Urban Planning and Design

Residential
Office buildings
Industrial Buildings
Sport/ Wellness/ Entertain
Accommodation / Hotel
Social/ Healthcare / Scholastic
Environmental / Green

PROJECTS

Urban Planning and Design



Best Technologies Planning for Energy Saving and Building Isolation

Thermal Coating System from *outside* in panels

- Easy to install
- Different typologies of choices and thicknesses
- Ecological new products
- Little maintenance during years
- Save money from heating systems



Thermal Coating System from *inside*

I°

- Isolations for Historical Buildings
- Hide inside structures (*p.e. Plasterboards*)
- Quick and easy installation

II°

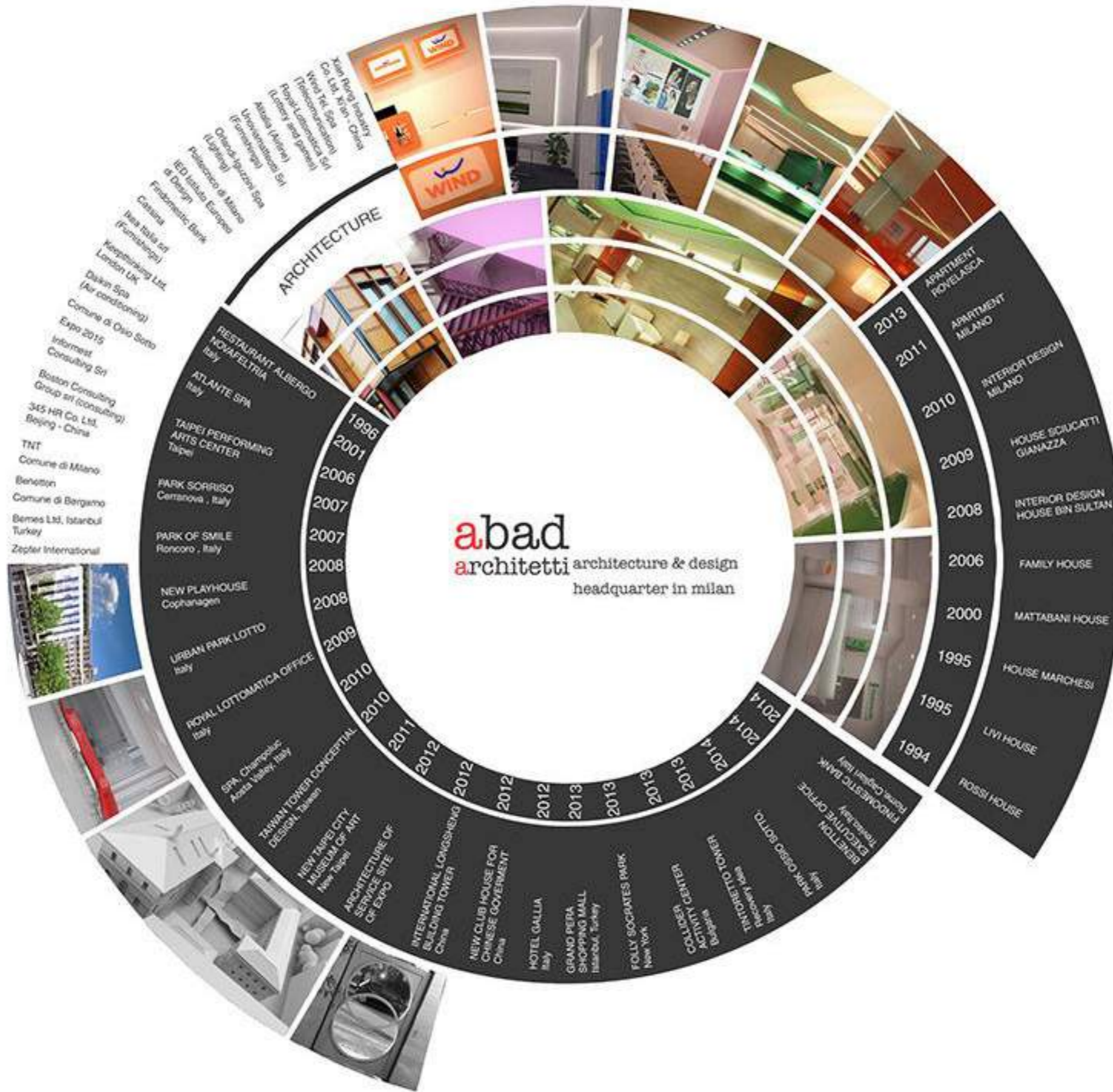
- Blowing from inside walls
- Cheap and easy
- Ecological product
- Recycled materials
- Anti-vibrations (*wall / floor / roof / structure*)
- Noise pollution
- Fire insulation with new materials and technology



Thermal insulation

Soundproofing

Fire-Resistant





Taiwan Tower

Formal invitation letter for attending the competition by Taiwan Government

註冊審查通過通知函

Letter of Acceptance of Registration

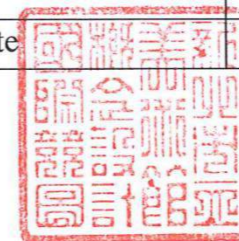
感謝您參加「新北市立美術館」概念設計國際競圖，你的註冊文件經審查後：

Thank you for your participation in the New Taipei City Museum of Art Conceptual Design International Competition. Your registration has been:

■ 通過。Accepted.

註冊內容如下： Registration Contents:

編號 Number	242.
參賽者名稱 (代表人) Name of the Representative Participant	負責人姓名 Name of Responsible Person
Alessandro Bianchi Abad Architetti Srl	Andrea Pirollo Abad Architetti Srl
共同參賽者名稱 Joint Participant Team Member	負責人姓名 Name of Responsible Person
1.	
2.	
3.	
4.	
日期 Date	2011/07/28



*New Taipei City Museum of Art Conceptual Design
International Competition*

「新北市立美術館」設計概念國際競圖
New Taipei City Museum of Art Conceptual Design
International Competition

Changing colors





ANIMATION TWO

AGREEMENT FOR DESIGN SERVICE

Project Name: **Longsheng International Office Building – Xi'an (China)**
Client: **Xian Rong Industry & Trade Co., Ltd** - Real Estate Invests Department
Designer: **Abad Architetti Srl** (Abad Architects Ltd)

1. DEFINITIONS

As used herein and throughout this Agreement:

1.1 Agreement means the entire content of this Basic Terms and Conditions document, the Proposal documents, Schedule A, together with any other Supplements designated below, together with any exhibits, schedules or attachments hereto.

1.2 Client Content means all materials, information, photography, writings and other creative content provided by Client for use in the preparation of and/or incorporation in the Deliverables.

1.3 Copyrights means the property rights in original works of authorship, expressed in a tangible medium of expression, as defined and enforceable under China/Italy Copyright Law.

1.4 Deliverables means the services and work product specified in the Proposal to be delivered by Designer to Client, in the form and media specified in the Proposal.

1.5 Designer Tools means all design tools developed and/or utilized by Designer in performing the Services, including without limitation pre-existing and newly developed software including source code, Web authoring tools, type fonts, and application tools, together with any other software, or other inventions whether or not patentable, and general non-copyrightable concepts such as website design, architecture, layout, navigational and functional elements.

1.6 Final Art means all creative content developed or created by Designer, or commissioned by Designer, exclusively for the Project and incorporated into and delivered as part of the Final Deliverables, including and by way of example, not limitation, any and all visual designs, visual elements, graphic design, illustration, photography, animation, sounds, typographic treatments and text, modifications to Client Content, and Designer's selection, arrangement and coordination of such elements together with Client Content and/or Third Party Materials.

1.7 Final Deliverables means the final versions of Deliverables provided by Designer and accepted by Client.

1.8 Preliminary Works means all artwork including, but not limited to, concepts, sketches, visual presentations, or other alternate or preliminary designs and documents developed by Designer and which may or may not be shown and or delivered to Client for consideration but do not form part of the Final Art.

1.9 Project means the scope and purpose of the Client's identified usage of the work product as described in the Proposal.

1.10 Services means all services and the work product to be provided to Client by Designer as described and otherwise further defined in the Proposal.

1.11 Third Party Materials means proprietary third party materials which are incorporated into the Final Deliverables, including without limitation stock photography or illustration.

1.12 Trademarks means trade names, words, symbols, designs, logos or other devices or designs used in the Final Deliverables to designate the origin or source of the goods or services of Client.

Milan (Italy) – Xi'an (China), 27st May 2011

DESIGNER:

Abad Architetti Srl (Abad Architects Ltd)

Signed: _____

By: **Alessandro Bianchi**

Title: **Principal Partner of Abad Architects Ltd**

Date: **27.05.2011**

abad architetti srl
viale regina margherita 33
20122 milano - italy
c.f. 06527810961
r.e.a. milano 1898370
t. +39 02 54123834
f. +39 02 54010167

abad

www.abad.it
info@abad.it

CLIENT:

Xian Rong Industry & Trade Co., Ltd. - Real Estate Invests Department

Signed: _____

By: _____

Title: _____

Date: _____



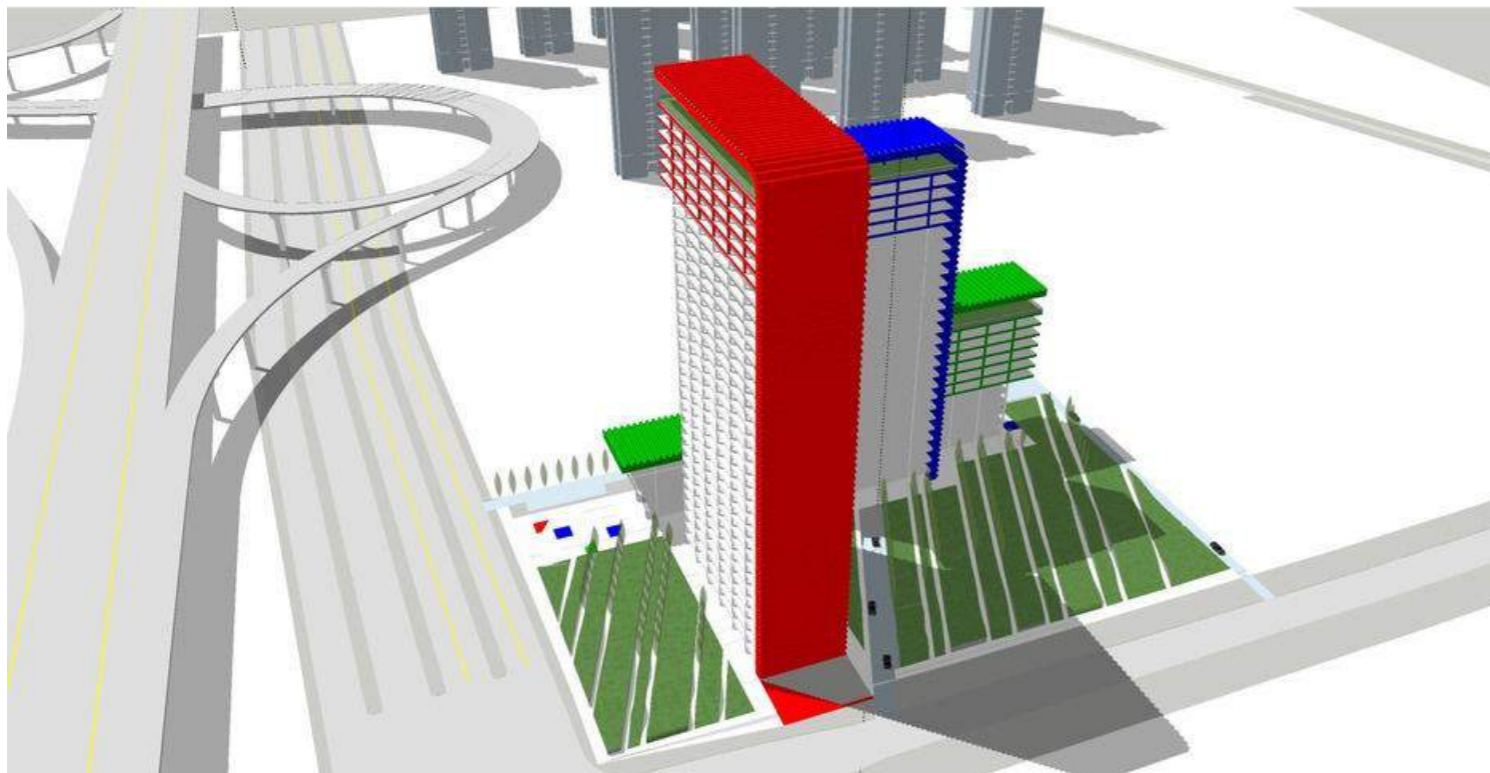
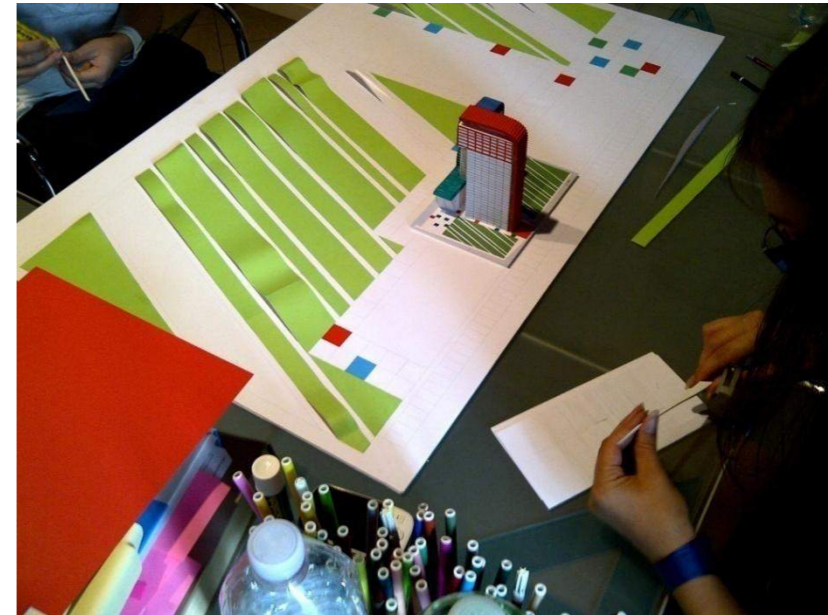
Longsheng Tower Xi'an China

Contract

abad
Abad Architetti Srl / Abad Architects Ltd
Headquarter - viale Regina Margherita 33 - 20122 Milano Italy
v.a.t. 06527810961 - registered enterprise milano
r.e.a. 1898370 - info@abad.it - www.abad.it - t. +39 02 54123834 - f. +39 02 54010167

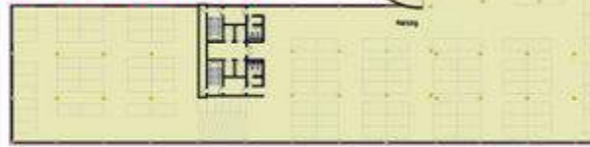
abad
Abad Architetti Srl / Abad Architects Ltd
Headquarter - viale Regina Margherita 33 - 20122 Milano Italy
v.a.t. 06527810961 - registered enterprise milano
r.e.a. 1898370 - info@abad.it - www.abad.it - t. +39 02 54123834 - f. +39 02 54010167

New skyline of the city

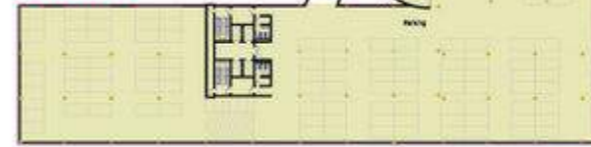


Levels plans

Level -3_Level -2



Level -1



Level 0



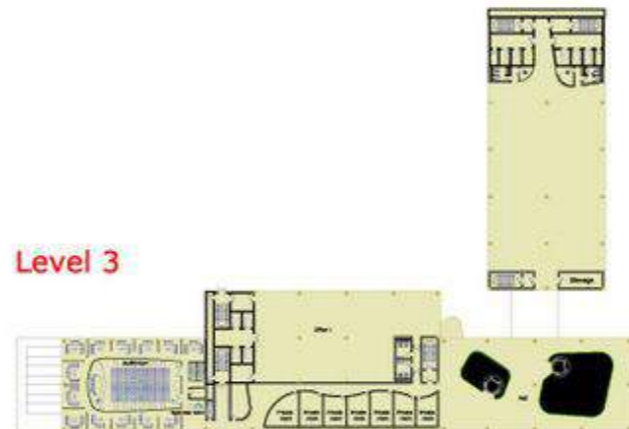
Level 1



Level 2



Level 3



Level -4_Level -6



Level 7



AGREEMENT

Parties:

WONG YI ARCHITECTURE & DESIGN COMPANY LIMITED

Room 401, 4th Floor, China Insurance Group Building,
141 Des Voeux Road Central,
Hong Kong, China.
(hereinafter called "Party A")

And

ABAD ARCHITETTI SRL

viale Regina Margherita 33
20122 Milano Italy
c.f. 06527810961

(hereinafter called "Party B")

Result of friendly negotiation between both of the parties, the Party A appoint the Party B provide a design work for the Party A's project of Haiyue Seaside Club (not the final name for this property), and enter the agreement details as following:

1. Design Criterion:

Make a master plan for the seaside club.

2. Project Background:

2.1 Private seaside club for reception of VIP guests;

2.2 Construction area: no more than 10000 m²; The building is two levels in the main body, partly can be three levels; The style must be interesting, low-key, durable, avoiding transient fashion; East, north, west sides need surrounding landscape design, south side is seaview.

2.2 Functions:

- **Reception hall**, no less than 300m², high space;
- **VIP presence chamber**, (no less than 200 m², must has washroom and service room);
- **Two conference room**, (each one can be used for 40 people);
- **Seaview club garden**, includes indoor area and outdoor area;
- **Cafe (Lounge)**, no less than 80 seats, connects with outdoor garden;
- **Twelve private restaurant rooms**, no less than 60 m² for each, all have washrooms and pantries;

5.2 345 Architecture Department has put the concept design in process: If ABAD's plan fit the client's needs, it may become as one of the plans to submit to the client.

6. Payment:

3000 euro in total, first payment will be 2000 euro, last payment will be finished after full submission.

Bank transfer details:

Name: Abad Architetti srl

Bank: Banca Popolare di Lodi

Account (iban): IT96M0516401615000000000195

Swift code (ISO BIC): BPALITM1092

Signature:

(seal)



Signature

(seal)



Party A: **WONG YI ARCHITECTURE &
DESIGN COMPANY LIMITED**

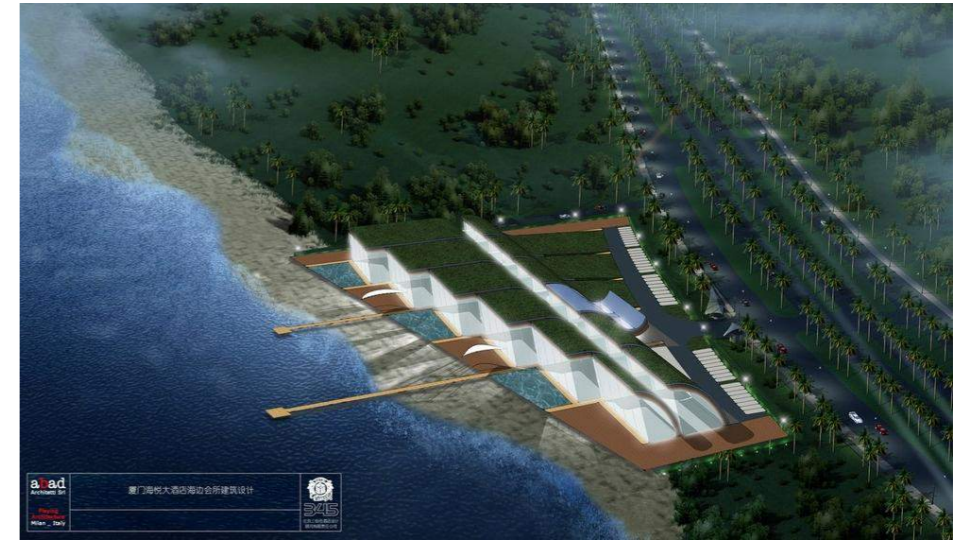
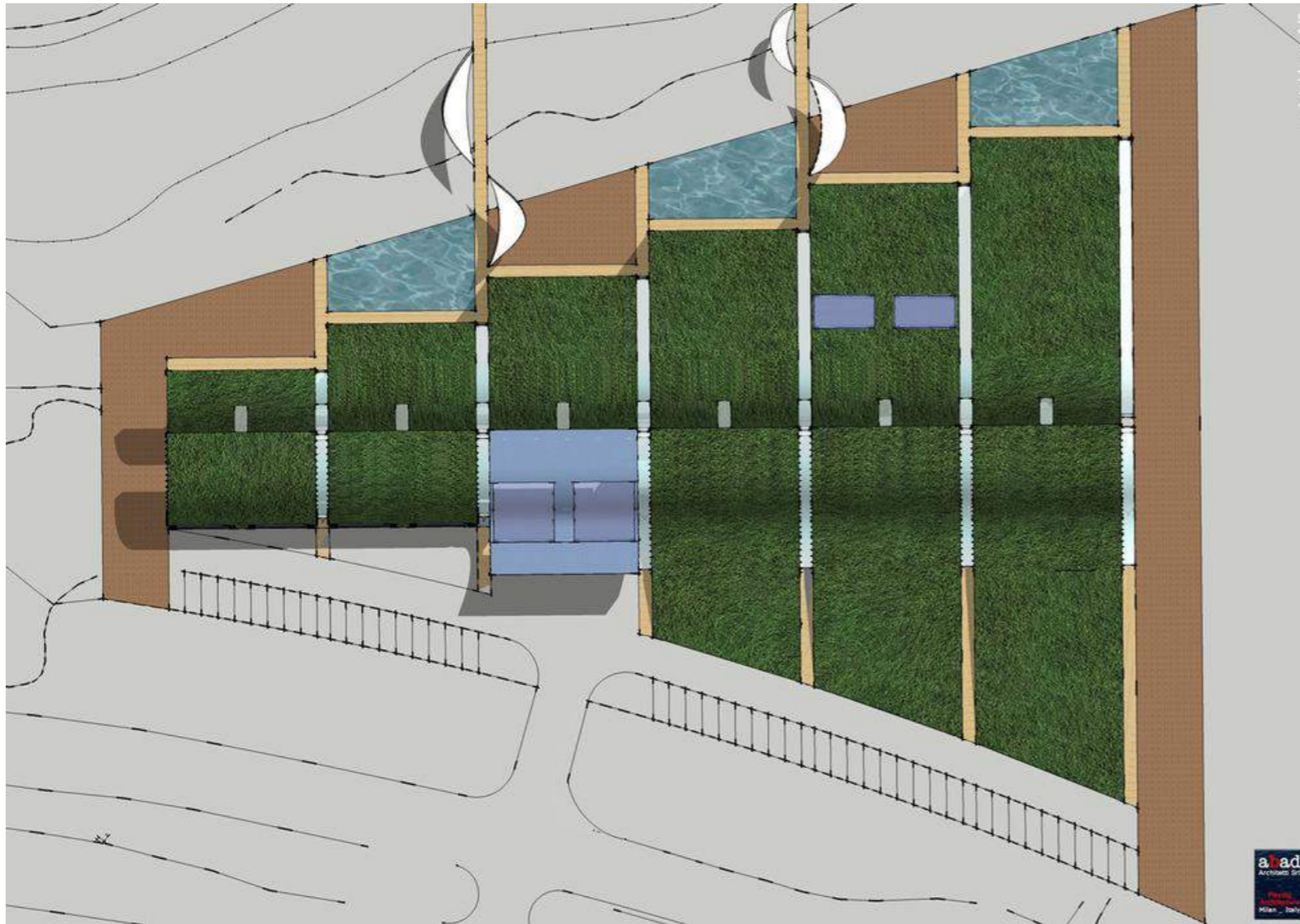
Party B: **ABAD ARCHITETTI SRL**

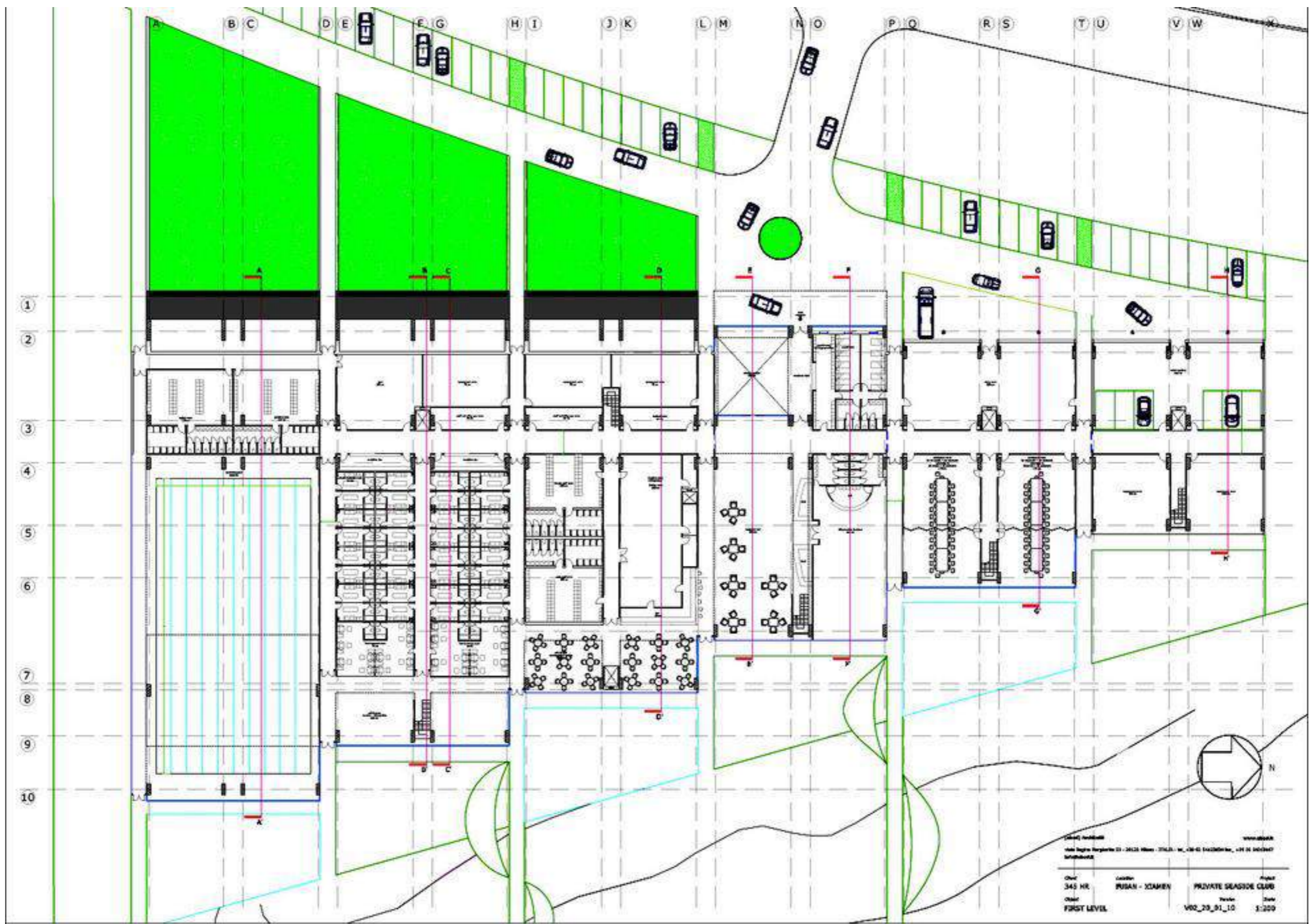
2009-12-10

Club house Xiamen, China

Contract

Green wave





(Scale) Architetto
 Via Inghis Bergoglio 21 - 20128 Milano - 02/4311.1111 - www.abad.it
 Architetto
 Client: 345 HR Location: PUSAN - SCAMEN Project: PRIVATE SEASIDE CLUB
 Date: FIRST LEVEL Scale: 1:200
 File: V02_20_01_10

Head portrait



Enrico Olivari, Geologist is the founder and Director of Elisias ambiente. He is an Environmental Geologist, Master in Environmental Engineering, with more than 20 years of experience in Italy and abroad as Consultant, Technical Director and Project Manager for Water Utilities (Iren Group), Multinational Companies, International Organisation (UN, EU bodies) and Public Administrations involved in Environmental Impact Assessment, Remediation, Monitoring, Risk analysis and Low Ghg technology services. He participates to Climate KIC activities.

Enrico was also employed as Public Officer in the Italian Public Administration for Environment (ARPA). Expert in Geology, Hydrogeology, Environmental Impact Assessment, Contaminated Sites Monitoring and Remediation, Risk Analysis, Waste Management, Due Diligence, GHG Accounting, ISO 14001, low GHG technologies (Geothermal and Heat Pump Applications).



Alessandro Bianchi, Architect, Chairman of Abad Architetti, he is professor and researcher at the Politecnico di Milano, having taught from 2000 to 2005 at IED (European Institute of Design) in Milan. He was editor of exhibitions and conferences on historical and contemporary architecture. He is author of numerous scientific and professional publications. His studio, Abad Architects Ltd, for urban design, architecture and interior design in Milan. Projects in Italy and in other countries. Abad Architetti was founded by Alessandro Bianchi in 1999, now is an associated partnership, partners Alessandro Bianchi, Andrea Pirolo and Massimiliano Zigo. They specialized in residential and commercial buildings planning, restoration and renovation, interior design, national and international competitions for urban design, urban upgrading and public parks and gardens. Abad architetti Ltd has recently joined Big Magic Design Ltd in Shenzhen, where opened its China agency.

Head portrait



Riccardo Palenzona Chemist, SIGE, Chemist. is an Environmental Consultant, degree in chemistry, with more than 15 years of experience in contaminated sites, monitoring and remediation, risk assessment, due diligence, decommissioning, waste management.

His workplace is Servizi Industriali Genova SIGE S.r.l., a primary HSE consulting company, where he is Technical manager and Project supervisor in "Remediation area" involved in Investigations plans elaboration, Supervisor for chemical characterization of soil, surface water and groundwater and classification of waste, Monitoring and Remediation, Benchmarking of sustainability strategies for remediation, Arrangement of Securing and Remediation Projects, Decommissioning of industrial site. Management and mediation in waste disposal and/or waste recycling operations. Technical Direction in execution of the Projects. During about 50 procedures relative to contaminated sites, followed both in project and operational since 1999, he managed executions of about 40 investigations, securing and realization of remediation projects of soil and/or groundwater.



Pietro Rescia, Engineer, Rescia Consulting Ltd, Engineer, Chartered Civil and Environmental Engineer with more than 20 years of experience in Italy and abroad (Ehtioopia, Albania, Spain, Kazakhstan, UK) as EU Officer, Eni Group-Saipem, URS Corp., Golder Associated, Worley Parson Corp. Pietro is UK based.

Expert in ESIA, Permitting, Sustainability, Stakeholder engagement, Due diligence, IFC and Equator Principle in sectors: Oil&gas, Mining, Manufacturing, International Organization, Public Sector



Andrea Pella, Architect, Bachelor's Degree in Architecture at the Politecnico di Milano (Italy) has matured works experiences travelling from Italy to around Europe and World during these years. Expert in BIM Technology Design, new Architecture Technology and Building Sustainability, he spends a lot of time and effort on studying, researching and enhancing architectural designs which will comply with future regulatory environmental requirements. His business continuously studies and monitors the latest developments in the market place by subscribing to and participating in Architectural Competitions in order to offer to clients the very latest designs available. Covering most contemporary styles of design and quality brands of product, the quality of his architectural work is guaranteed to be of a proud and highest Italian order.

References for Environmental Services

Aeroporto di Genova S.p.A.

Alstom Ferroviaria Spa,

Ansaldo Energia S.p.A.

Automotive Products Italia S.r.l.

Autorità Portuale del Porto di Genova,

Azienda Mobilità e Trasporti (Genova),

Boero Bartolomeo S.p.A.

Cantieri Navali Rodriguez S.p.A.

Cemusa S.A.

Postel S.p.A.

Comunità Montana Alta Val Polcevera,

Coop Liguria S.c.r.L.

Coopsette S.c.r.L.

Costa Crociere S.p.A.

D'Amico Società di Navigazione S.p.A.

Elsag S.p.A.

Federgasacqua, Ferrania S.p.A.

Ferrovial Agroman S.A.

Fiera di Genova S.p.A.

Filippa spa Landfill,

Fratelli Carli S.p.A.

Sopraril Italia S.p.A.

Grandi Navi Veloci S.p.A.

Iplom S.p.A.

IREN Group,

Italcementi Group Spa,

Italian Ministry of Environment,

Italian Municipalities,

Italiana Coke S.p.A.

Italiana Petroli S.p.A.

Aquater S.p.A.

Marconi Communication S.p.A.

Marina di Porto Antico (Genova),

MWH Global spa,

Oto Melara S.p.A.

Piaggio Aero Industries S.p.A.

Porto Petroli di Genova S.p.A.

Poste Italiane S.p.A.

Postelprint S.p.A.

Provincia di Genova,

Regione Liguria, Rina Industry S.p.A.

Sab Wabco S.p.A.

Sain Gobain Vetri S.p.A.

Datasiel S.p.A.

Saint Gobain Vetrotex S.p.A.

Saint Gobain Spa,

Schneider Electric S.p.A.

Sertubi S.p.A.

Snam Rete Gas S.p.A.

Snamprogetti S.p.A.

Fincantieri S.p.A.

Società Autostrade S.p.A.

T. Mariotti S.p.A.

University of Genoa,

UNLB United Nations Logistic Base,

URS Italia Spa

References for Architecture Services

345 HR Co., Ltd Beijing Cina,
Aiesse Srl,
ASP, Alta Scuola Politecnica,
Banca Intesa San Paolo, Spa,
Banca popolare dell'Emilia Romagna, Spa, Modena
Berti Costruzioni Srl,
Bemes Ltd, Istanbul, Turkey
Bologna Fiere Spa,
Boston Consulting Group Srl,
Cassina Spa,
Ceriani Luce Srl,
Cohousing Ventures srl,
Colombo Idro Spa,
Comune di Barzio, Lecco,
Comune di Novafeltria, Rimini,
Comune di Osio Sotto, Bergamo,
Comune di Rimini,
Comune di Treviglio, Bergamo,
Condominio via Lomazzo 14,
Condominio via Motta 9, Milan,
Condominio via Perugino 16, Milan,
Daikin Spa,
Dueci Immobiliare Srl,
èCondema Srl,
Eraclea Srl,
Ergospace Srl,
EXPO Spa, Milan

Findomestic Banca Spa, Florence
IED, Istituto europeo di design, Milan
Informest Consulting Srl,
Innosense Srl,
Italprogetti Srl,
Keepthinking Ltd, London UK,
Lanzauto Spa,
Lanzotti & Cleveland Srl,
Loch Srl,
Marullo Costruzioni Srl,
MB elettronica Srl,
Mc Selvini,
Mylan Spa,
Opera Real Estate Spa,
Officina Design Srl,
Orlandi-Iguzzini Spa,
Politecnico di Milano,
Progetto.06 Sas,
Ristorante Albergo Da Marchesi,
Ristorante Retrogusto,
Royal-Lottomatica Srl,
Sir Srl,
Studio Sant'ambrogio Srl,
Tri-Bu Srl,
Unoviamatteotti Srl,
Wind Spa



Contacts

Enrico Olivari

Mob. +39 349 17 23 140
Fax +39 02 400 42 630
elisasambiente@gmail.com



ELISAS ambiente

Sustainability GHG accounting Remediation
Risk Assessment Due Diligence ESIA EMS

Alessandro Bianchi
Andrea Pella

Mob +39 335 6357401
Mob +39 349 2558826
abianchi@abad.it
pella.andrea@gmail.com

abad
architetti

architecture & design
headquarter in milan



ELISAS ambiente

Sustainability GHG accounting Remediation
Risk Assessment Due Diligence ESIA EMS

abad
architetti

architecture & design
headquarter in milan



POLITECNICO DI MILANO



INGEGNERIA PER L'AMBIENTE E LA SICUREZZA SUL LAVORO

RESCIA
CONSULTING